

## GENERAL

- ALL MATERIALS AND WORKMANSHIP SHALL CONFORM TO THE LATEST EDITION OF ALL RELEVANT CODES AND STANDARDS.
- CONFORM TO OWNER'S GENERAL SPECIFICATIONS INCLUDING ALL SAFETY REQUIREMENTS.
- SITE VERIFY ALL DIMENSIONS AND LEVELS.
- KEEP THE SITE THROUGHOUT THE WORK AREA IN A CLEAN AND ORDERLY CONDITION AT ALL TIMES TO THE SATISFACTION OF THE OWNER.
- ALL STRUCTURAL DRAWINGS ARE TO BE READ IN CONJUNCTION WITH OTHER CONSULTANTS DRAWINGS.
- THE PROPOSED REPAIRS TO THE FOUNDATION OF THE SALT STORAGE DOME ARE A SHORT TERM SERVICEABILITY STOP GAP REPAIR WHILE THE MUNICIPALITY OF CLARINGTON IMPLEMENTS LONG TERM CAPITAL PLANNING FOR REPLACEMENT OF THE STRUCTURE. FURTHER CRACKS AND SPALLING SHOULD BE ANTICIPATED AFTER THE REPAIRS HAVE BEEN COMPLETED.
- THE REMEDIAL REPAIRS WERE COMPLETED UTILIZING EXISTING INFORMATION ON REFERENCE DRAWINGS DRAWINGS BY SUB-COIN ENGINEERING CORPORATION PROFESSIONAL ENGINEERS DATED JUNE 20, 1985.

## CONCRETE

- CONCRETE CONSTRUCTION SHALL CONFORM TO THE LATEST EDITION OF CAN/CSA-A23.1 AND CAN/CSA-A23.3 WITH THE FOLLOWING PROVISION:

LOCATION	DESIGN STRENGTH (28 DAYS)	SLUMP	EXPOSURE CLASS
ALL EXTERIOR REINFORCED CONCRETE (STAIRS & RETAINING WALLS)	35 MPa U.N.O.	80± 30	C-1

- NO ADDITIONAL WATER SHALL BE ADDED AT THE JOB SITE. CONCRETE WHICH HAS BEEN WATERED OR DOES NOT MEET SPECIFICATIONS SHALL BE REJECTED.
- DURING WINTER WEATHER BELOW 5 °C PROVIDE TEMPORARY HEATING OF CONCRETE IN ACCORDANCE WITH THE REQUIREMENTS OF CSA A23.1, LATEST EDITION.
- STRUCTURAL GROUT SHALL BE NON-SHRINK, NON METALLIC M-BED STANDARD PREMIX BY SIKKA OR APPROVED EQUAL.

## CONCRETE REINFORCEMENT

- THE CLEAR DISTANCE BETWEEN REINFORCING STEEL AND SURFACE OF CONCRETE SHALL BE AS FOLLOWS UNLESS NOTED OTHERWISE.

LOCATION	CLEAR COVER
WALLS	50mm(2") AGAINST EARTH (20M BAR OR GREATER)
	40mm(1 1/2") AGAINST EARTH (15M BAR)
	40mm (1 1/2") AGAINST FORM (20M BAR OR GREATER) 25mm (1") AGAINST FORM (15M BAR)

- DETAIL REINFORCING STEEL IN ACCORDANCE WITH "REINFORCING STEEL MANUAL OF STANDARD PRACTICE" LATEST EDITION.
- REINFORCING BAR SPLICES FOR DEFORMED BARS:  
COLUMNS - COMPRESSION LAP UNLESS NOTED  
WALLS - CLASS 'B' TENSION SPLICE UNLESS NOTED  
ALL OTHERS - CLASS 'B' TENSION LAP UNLESS NOTED
- ALL REINFORCING STEEL SHALL BE DEFORMED HARD GRADE BILLET STEEL CONFORMING TO CSA G30.18 GRADE 400.
- WELDED STEEL WIRE FABRIC, PLAIN TYPE CONFORMING TO ASTM A1064/A1064M-17 IN FLAT SHEETS NOT ROLLED.
- ALL CONCRETE REINFORCEMENT MUST BE PROPERLY CHAIED WITH APPROVED BAR SUPPORTS.
- PROVIDE CHAIRS, SPACER BARS, SUPPORT BARS AND OTHER ACCESSORIES TO SUPPORT REINFORCING IN ACCORDANCE WITH THE LATEST EDITIONS OF CSA A23.1 AND CSA A23.3 CHAIRS TO BE PLASTIC, PLASTIC TIPPED OR CONCRETE. ALL THE WIRE, CHAIRS AND BAR SUPPORTS USED FOR COATED REINFORCING SHALL BE NON-METALLIC OR PROTECTED WITH ACCEPTABLE COATING.
- CHAIRS SHALL BE SPACED AT 1200mm(4'-0") O.C. MAXIMUM.

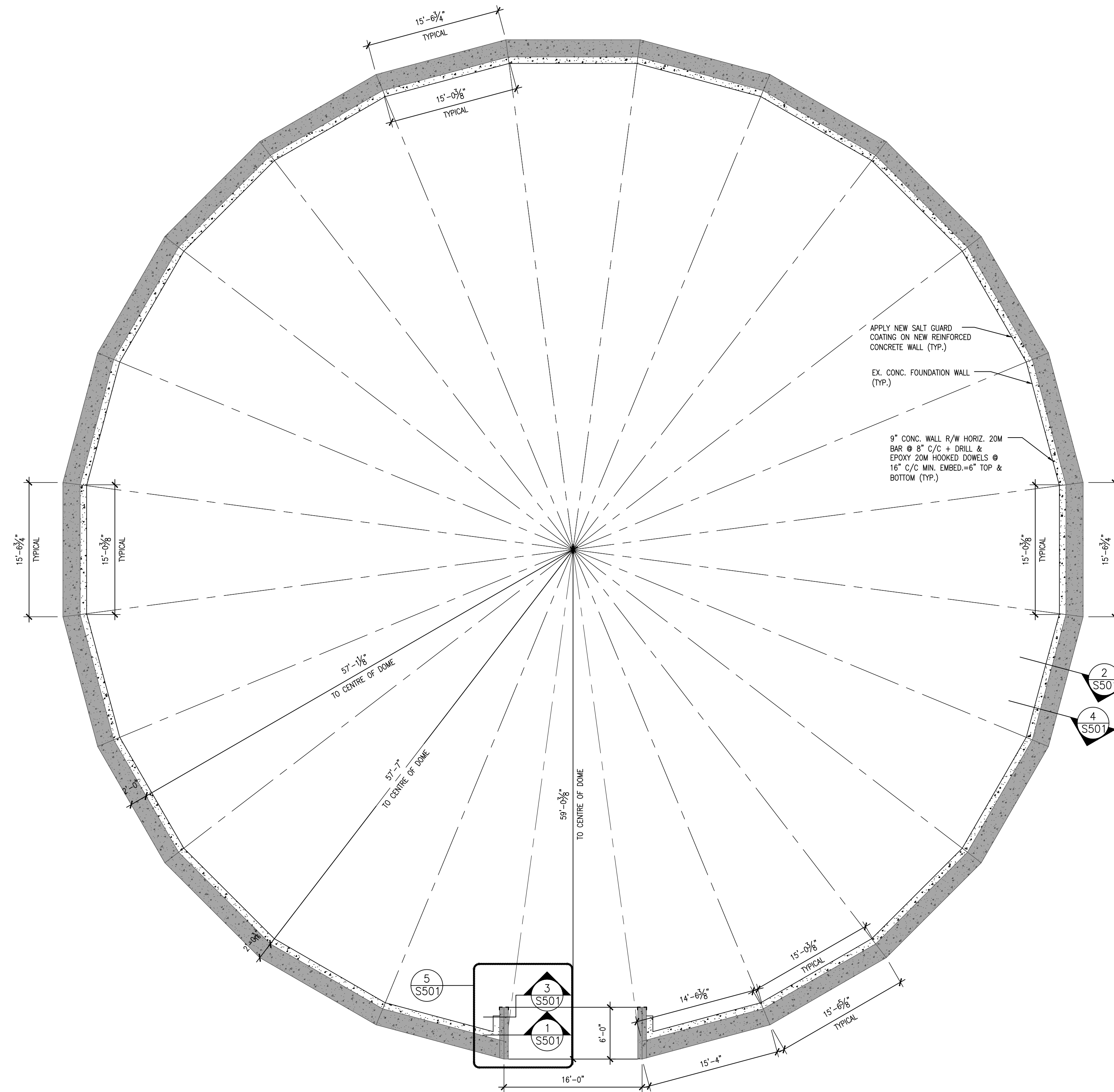
## DOME DESIGN LOADS

DEAD LOAD = 1.63 kPa

SNOW LOAD = 1.52 kPa

QUANTITIES OF REPAIRS		
REPAIR TYPE:		DETAIL
HAIRLINE CRACK	= 60.0 LFT	6/S501
< 1/4" CRACK	= 215.0 LFT	6/S501
1/4"-1/2" CRACK	= 145.0 LFT	7/S501
> 1/2" CRACK	= 65.0 LFT	7/S501
SPALL	= 110 SQFT	1/S501 & 2/S501

NOTE: CONTRACTOR TO SITE VERIFY ESTIMATED QUANTITIES FOR REPAIRS



DO NOT SCALE THE DRAWINGS  
CHECK AND VERIFY ALL DIMENSIONS AT THE SITE.  
ALL DRAWINGS, SPECIFICATIONS AND RELATED DOCUMENTS ARE THE COPYRIGHT PROPERTY OF THE CONSULTANT AND MUST BE RETURNED UPON REQUEST. REPRODUCTION OF DRAWINGS IN PART OR WHOLE WITHOUT THE PERMISSION OF THE CONSULTANT IS FORBIDDEN.  
DRAWINGS ARE NOT TO BE USED FOR CONSTRUCTION UNTIL SIGNED AND SEALED BY THE CONSULTANT.

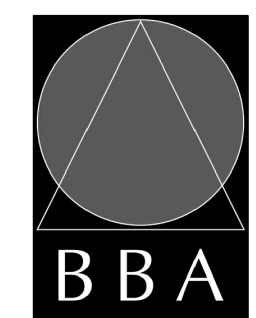
NO.	ISSUES	DATE	BY
1	ISSUED FOR REVIEW	JUNE 07, 2024	BBA
2	ISSUED FOR TENDER	FEB 03, 2025	BBA

NO.	REVISIONS	DATE	BY
-----	-----------	------	----

PROJECT:  
**EXISTING SAND STORAGE  
CONCRETE WALL REPAIR**

2320 TAUNTON ROAD,  
HAMPTON, ON L0B 1J0  
MUNICIPALITY OF CLARINGTON

DRAWING:  
**STRUCTURAL NOTES  
AND FOUNDATION PLAN**



**BARRY BRYAN  
ASSOCIATES**

Architects  
Engineers  
Project Managers

250 Water Street  
Suite 201  
Whitby, Ontario  
L1N 0G5  
Tel: (905) 666-5252  
Fax: (905) 666-5250  
e-mail: bba@bba-archeng.com

DESIGN BY: BBA	DOC CONTROL DATE:
DRAWN BY:	% COMPLETE:
CHECKED BY:	INITIAL:

DATE: APRIL 2024
SCALE: 1/8" = 1'-0"
FILE:

PROJECT NO: <b>24069</b>	DRAWING NO: <b>S101</b>
-----------------------------	----------------------------

**1**  
**S101** FOUNDATION PLAN  
1/8"=1'-0"

DO NOT SCALE THE DRAWINGS  
CHECK AND VERIFY ALL DIMENSIONS AT THE SITE.  
ALL DRAWINGS, SPECIFICATIONS AND RELATED DOCUMENTS ARE THE  
COPYRIGHT PROPERTY OF THE CONSULTANT AND MUST BE RETURNED  
UPON REQUEST. REPRODUCTION OF DRAWINGS IN PART OR WHOLE  
WITHOUT THE PERMISSION OF THE CONSULTANT IS FORBIDDEN.  
DRAWINGS ARE NOT TO BE USED FOR CONSTRUCTION UNTIL SIGNED  
AND SEALED BY THE CONSULTANT.

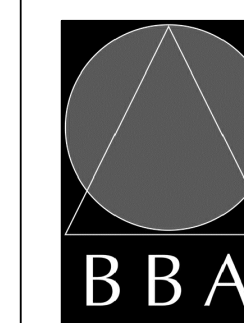
NO.	ISSUES	DATE	BY
1	ISSUED FOR REVIEW	JUNE 07, 2024	BBA
2	ISSUED FOR TENDER	FEB 03, 2025	BBA

NO.	REVISIONS	DATE	BY

PROJECT:  
**EXISTING SAND STORAGE  
CONCRETE WALL REPAIR**

2320 TAUNTON ROAD,  
HAMPTON, ON L0B 1J0  
MUNICIPALITY OF CLARINGTON

DRAWING:  
**PLAN AND SECTION  
DETAILS**



**BARRY BRYAN  
ASSOCIATES**

Architects  
Engineers  
Project Managers

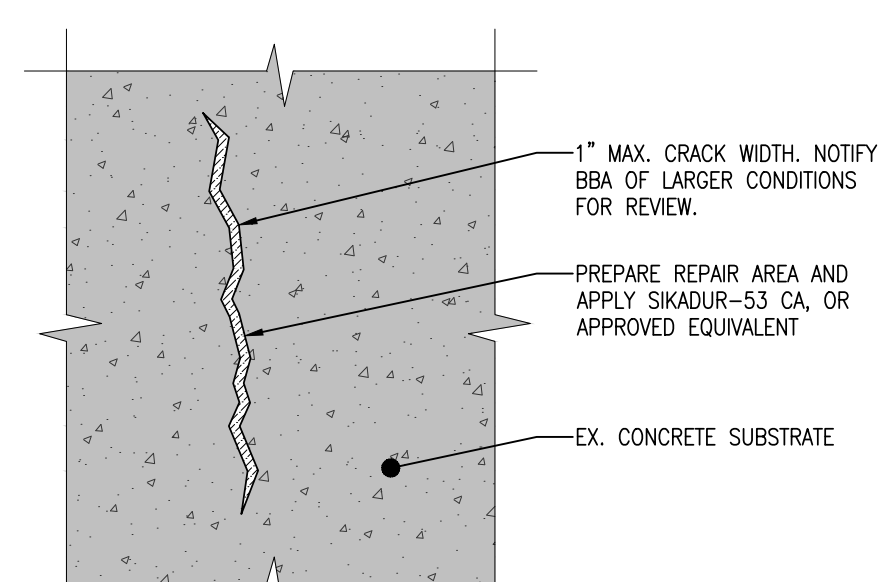
250 Water Street  
Suite 201  
Whitby, Ontario  
L1N 0G5  
Tel: (905) 666-5252  
Fax: (905) 666-5250  
e-mail: bba@bba-archeng.com

DESIGN BY: BBA	DOC. CONTROL: DATE:
DRAWN BY:	% COMPLETE:
CHECKED BY:	INITIAL:

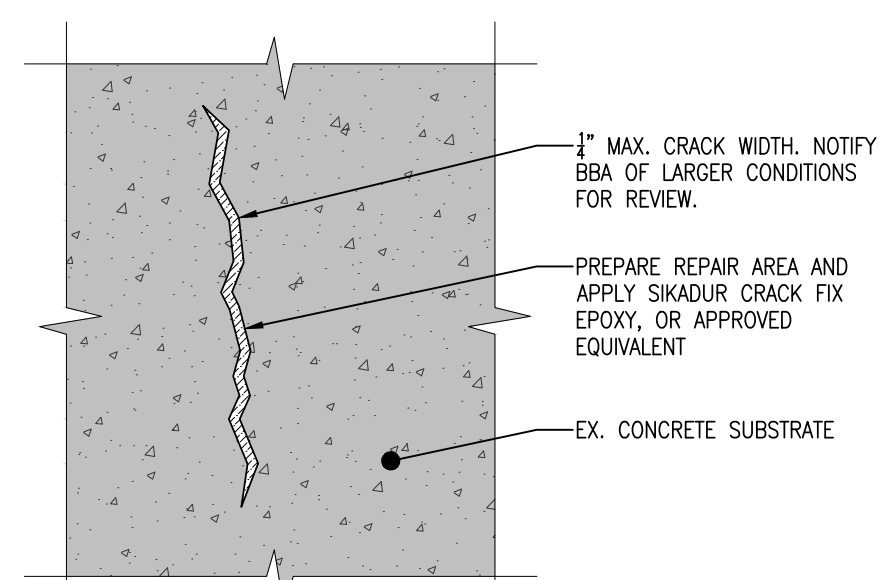
DATE: APRIL 2024	SCALE: AS NOTES
FILE:	

PROJECT NO:  
**24069**

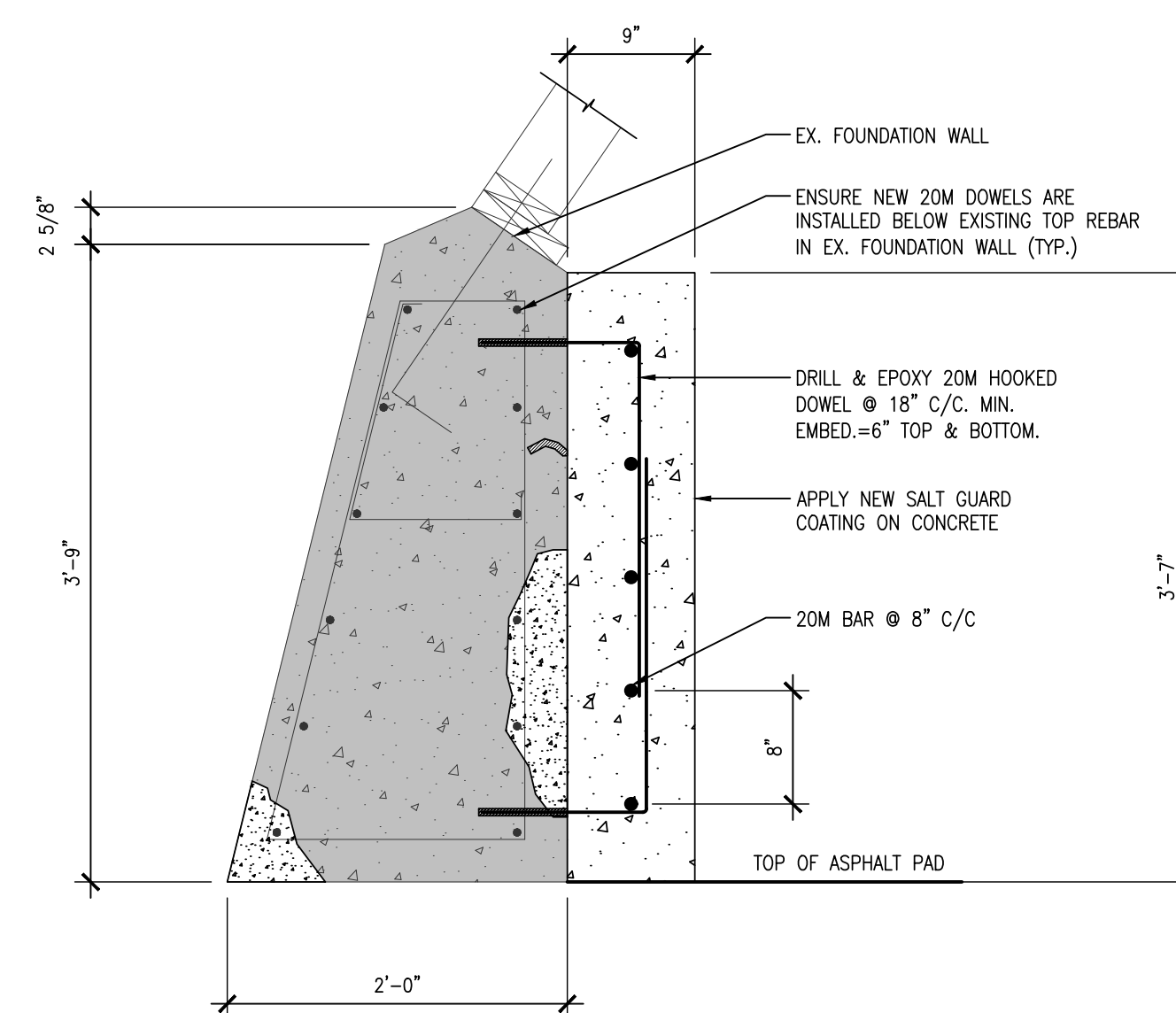
DRAWING NO:  
**S501**



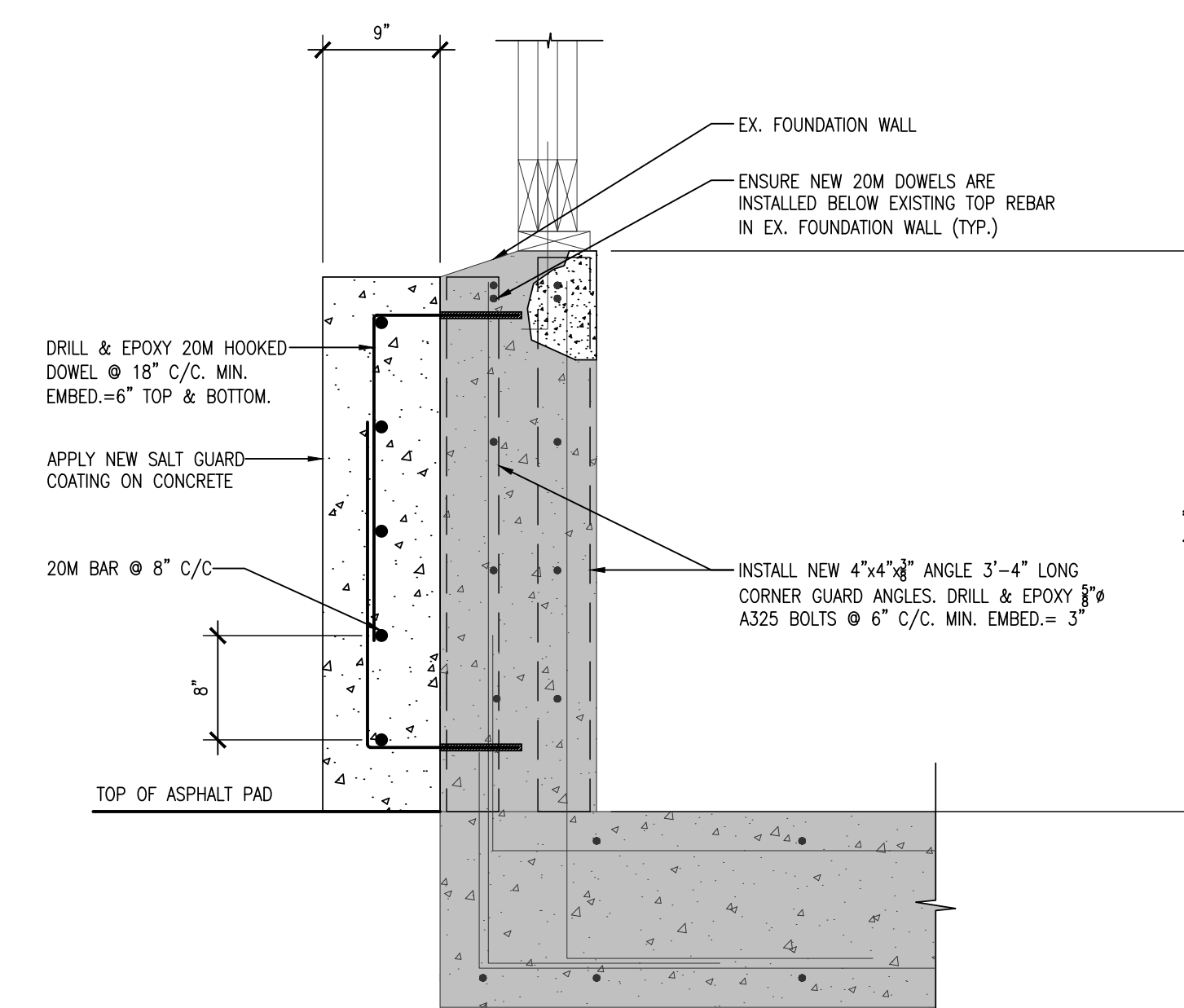
**7**  
S501 TYP. EPOXY INJECTION 1" MAX. CRACK REPAIR DETAIL  
N.T.S.



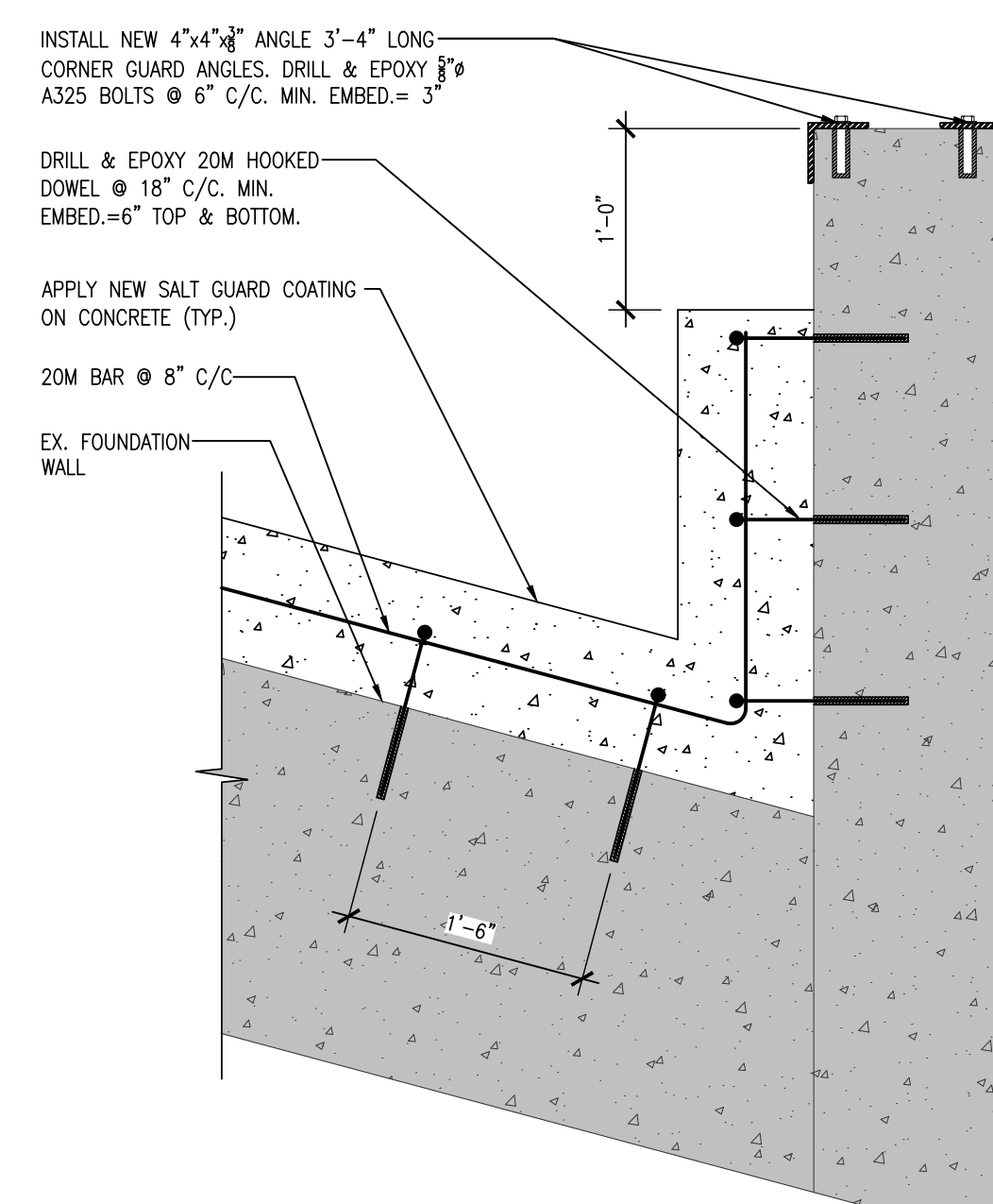
**6**  
S501 TYP. EPOXY INJECTION 1/4" MAX. CRACK REPAIR DETAIL  
N.T.S.



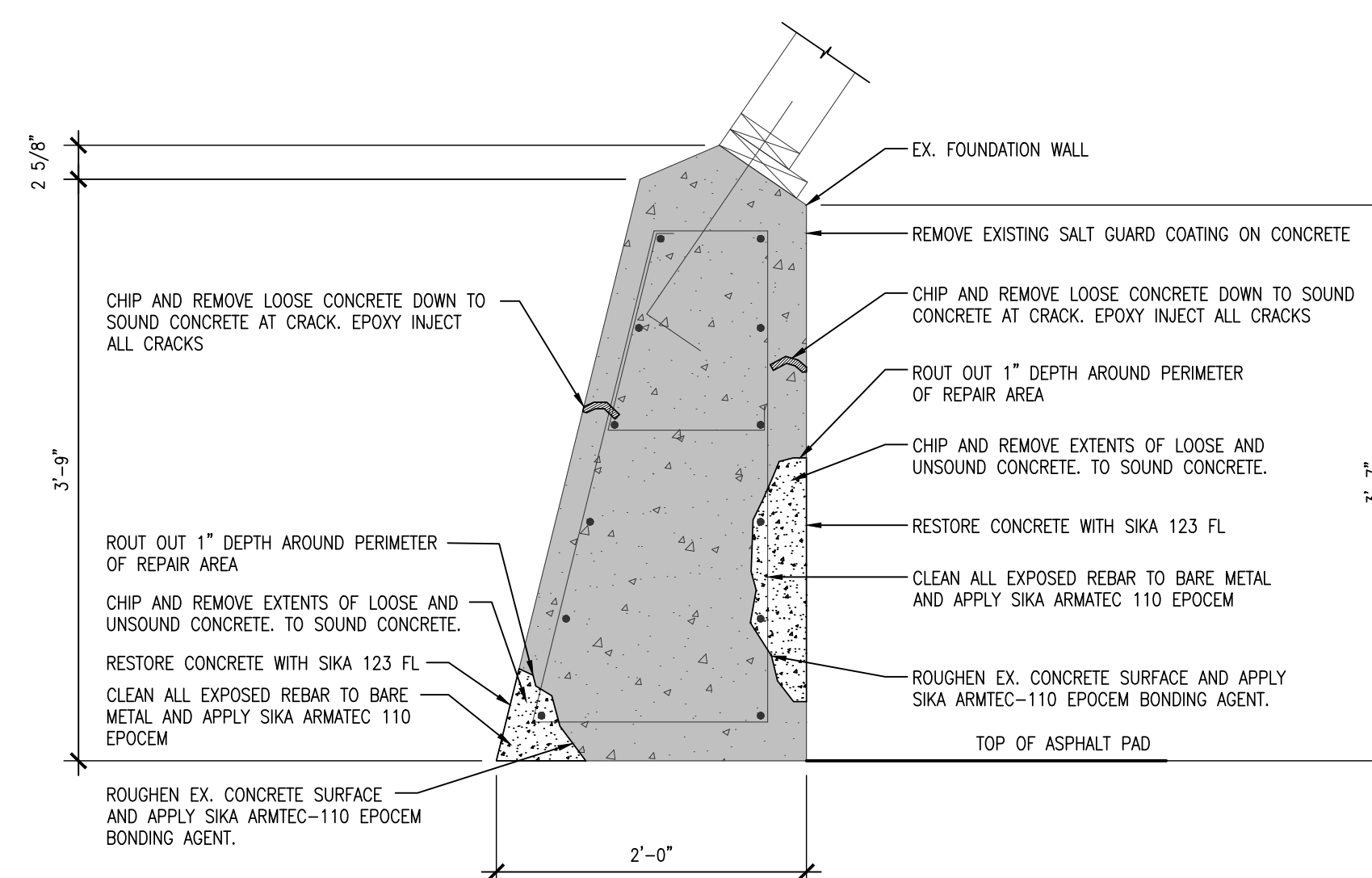
**4**  
S501 REINFORCED SECTION DETAIL  
1"=1'-0"



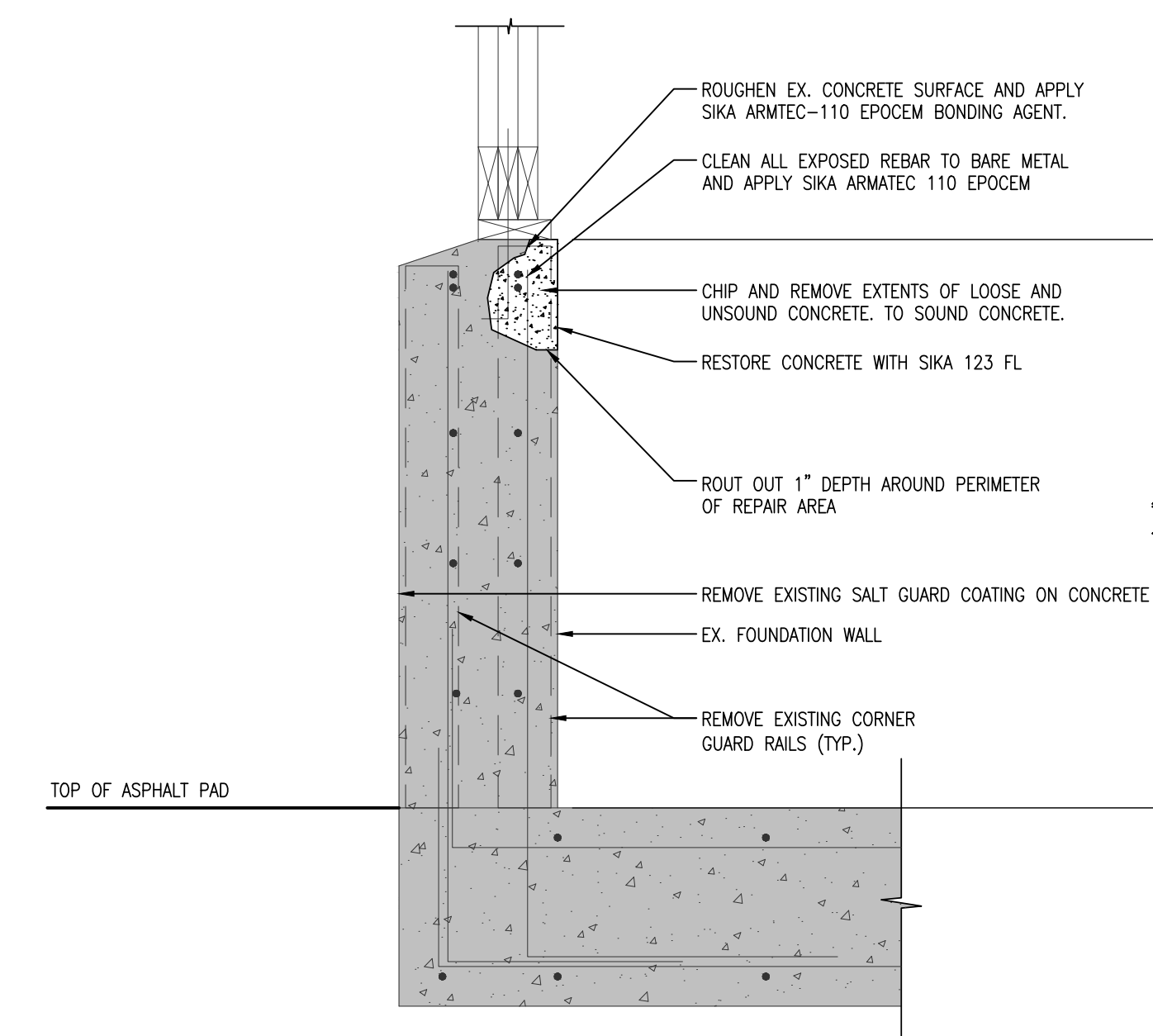
**3**  
S501 REINFORCED SECTION DETAIL  
1"=1'-0"



**5**  
S501 ENLARGED PLAN - CORNER REINFORCEMENT  
1"=1'-0"



**2**  
S501 REPAIR SECTION DETAIL  
1"=1'-0"



**1**  
S501 REPAIR SECTION DETAIL  
1"=1'-0"